

THE SHAKESPEARE SHOW INFORMATION ON INSIDE BACK PAGE

I want to begin 2016 by thanking you, the RSC's closest friends, for your continued support and involvement. It is going to be an extraordinary year celebrating Shakespeare's legacy.

With your contribution the RSC continues to thrive and between April 2014 and March 2015 you helped us to welcome 1.8 million people to 2,000 performances of 28 productions, to broadcast our work to 17 countries and to inspire 530,000 young people through our international education work which aims to spark a life-long love of Shakespeare.

We have a wonderful artistic programme this year and I am delighted to now share with you in this newsletter and the enclosed guide full booking details for the second half of 2016. Highlights include *King Lear* with Anthony Sher and a boldly reimagined production of *The Tempest* in collaboration with Intel and in association with The Imaginarium Studios, using the latest in digital technology and with Simon Russell Beale returning to the RSC to play Prospero.



Photo by Ellie Kurtz

In the Swan Theatre we look forward to *The Two Noble Kinsmen*, *The Rover* by Aphra Behn and a new play by Anders Lustgarten *The Seven Acts of Mercy*.

I hope you'll be able to join us for many of the productions and celebrations taking place throughout 2016 and to see the beautifully restored Swan Wing and much anticipated reopening of The Other Place.

Thank you again for helping us to create theatre at its best made in Stratford-upon-Avon and shared around the world with the widest possible audience. Your support is greatly appreciated by all at the RSC.

GREGORY DORAN
Artistic Director



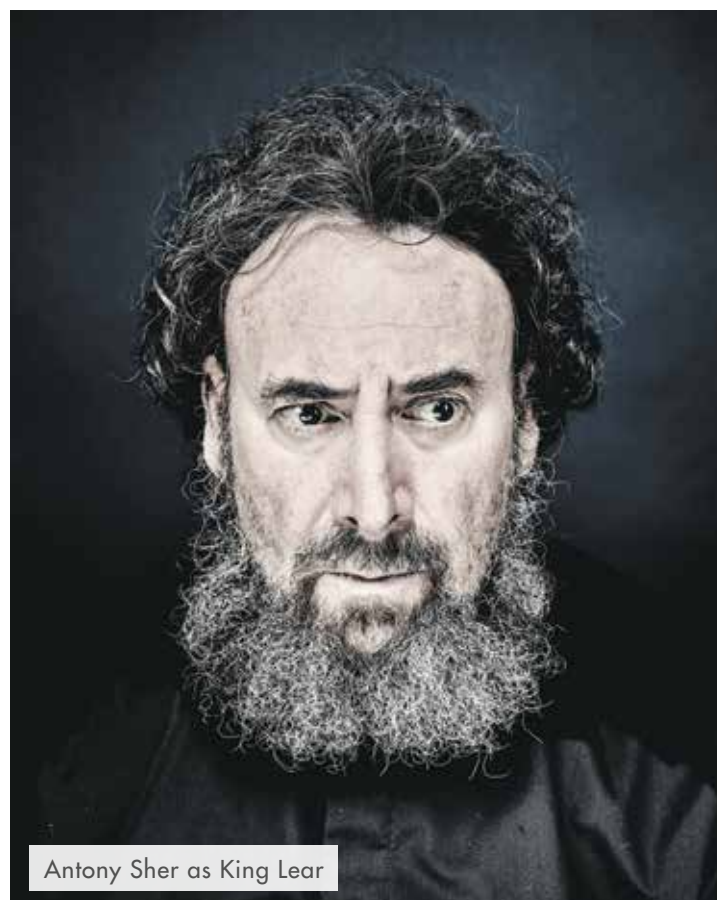
Supported using public funding by
**ARTS COUNCIL
ENGLAND**

ARTISTS CIRCLE	➤ ONLINE and PHONE booking opens 27 January 2016	■ TELEPHONE 01789 272234
PATRONS GOLD	➤ ONLINE and PHONE booking opens 27 January 2016	■ TELEPHONE 01789 272283
PATRONS SILVER	➤ ONLINE and PHONE booking opens 27 January 2016	■ TELEPHONE 01789 272318
SHAKESPEARE CIRCLE	➤ ONLINE and PHONE booking opens 28 January 2016	■ TELEPHONE 01789 403438

MAKE 2016 THE YEAR TO CELEBRATE SHAKESPEARE

Having launched Shakespeare's jubilee year with our flagship production of *A Midsummer Night's Dream*, and opened both *Hamlet* and *Cymbeline* in the Royal Shakespeare Theatre; we turn our attention to the second part of the year.

King Lear is a play that I have admired for many years, but I confess I have been intimidated by it. It touches profound and difficult subjects: family, dementia, mortality and the seemingly limitless human capacity for cruelty. Following his performance as tragic hero Willy Loman, Antony Sher now takes on the momentous challenge of Lear in a cast which includes David Troughton as Gloucester, Antony Byrne as Kent and Graham Turner as the Fool, with designs by Niki Turner (*The Witch of Edmonton* 2014, *Cardenio* 2011).



Antony Sher as King Lear



Antony Sher as Willy Loman in *Death of a Salesman*

Photos by Paul Stuart

30 YEARS OF THE SWAN THEATRE

In the Swan in 2016, we have rejoiced in Christopher Marlowe's anarchic *Doctor Faustus*, and marked both the 400th anniversary of Cervantes, with James Fenton's new adaptation of *Don Quixote* with David Threlfall and Rufus Hound, and of the 1616 publication of Ben Jonson's folio with his satirical farce *The Alchemist*. To close the year, we take a moment to celebrate 30 years of the Swan Theatre.

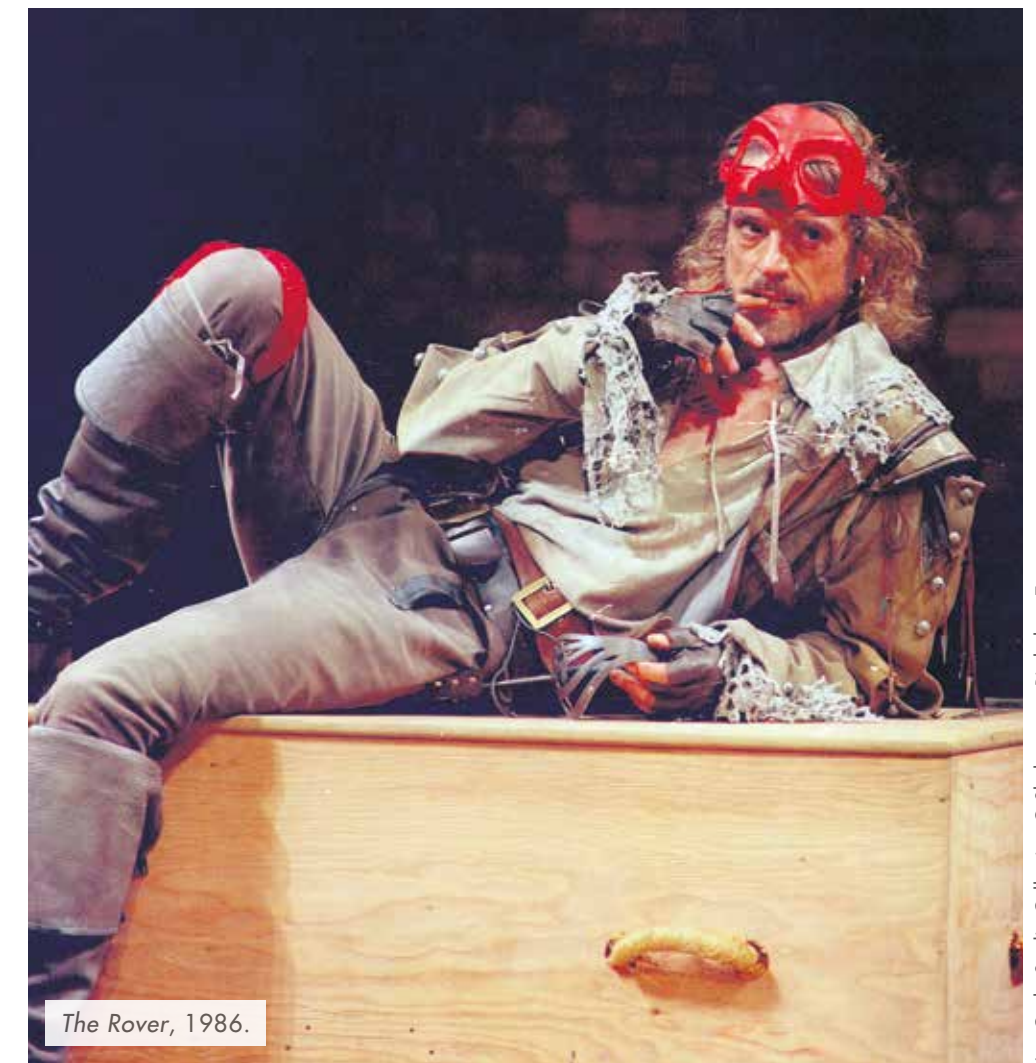
The Swan Theatre opened in 1986 with *The Two Noble Kinsmen* by Shakespeare and Fletcher, and Aphra Behn's *The Rover*. We revisit both these plays next year but also present a thrilling new play. *The Seven Acts of Mercy*, by Anders Lustgarten, a new play set in 1606 Naples and present day Bootle that confronts the necessity of compassion.

Plans for *The Shakespeare Show* on Saturday 23 April are hotting up. David Tennant will host a glittering evening which celebrates Shakespeare's legacy in all the performing arts from Opera and Ballet, to Musical Theatre, Jazz and Rap. There will be Verdi and Prokofiev, alongside *Kiss Me Kate* and *West Side Story*, Duke Ellington, Rufus Wainwright and Hip Hop Shakespeare. To end the evening we will light up the Warwickshire skies with a spectacular pyrotechnical display of fireworks

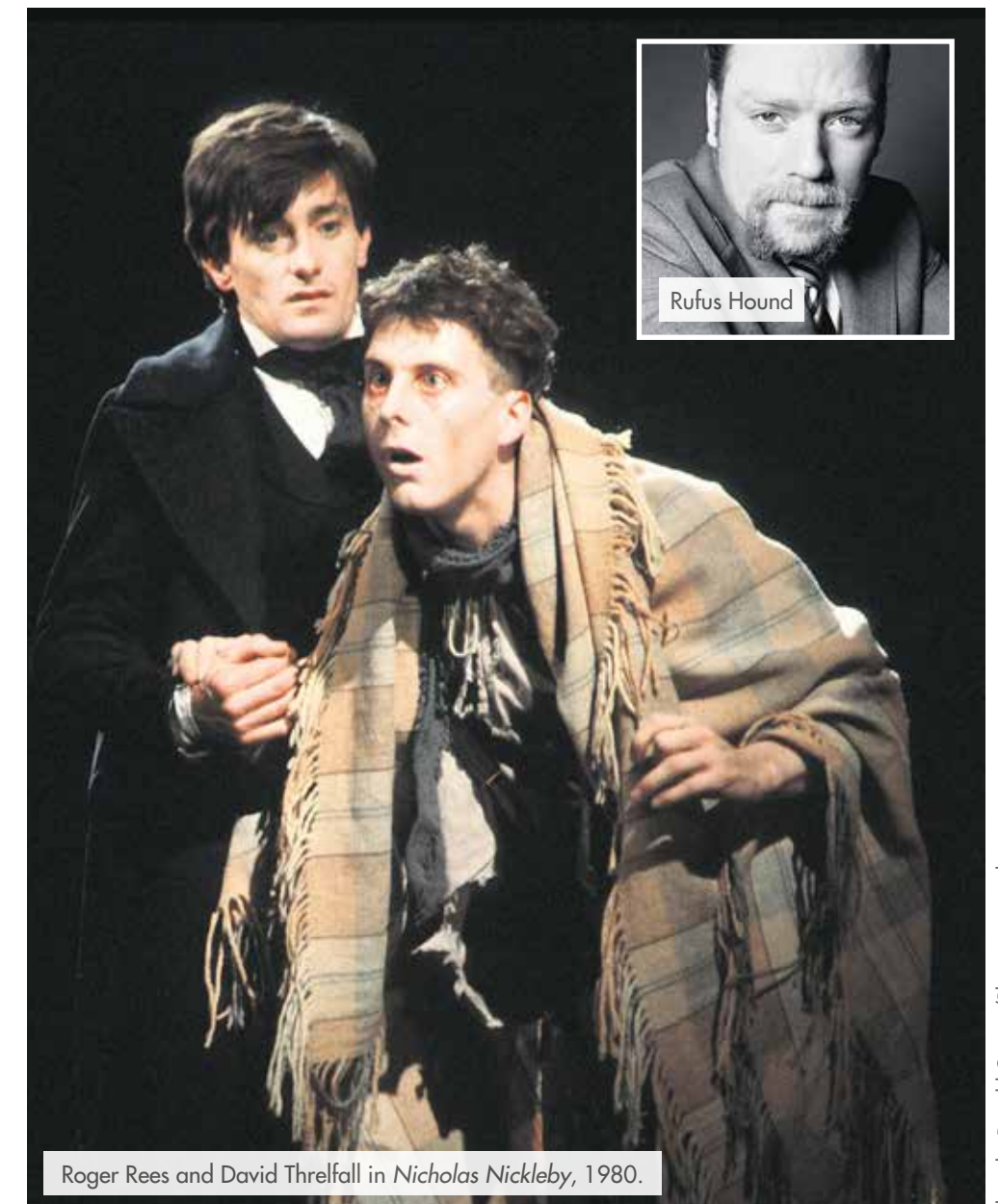
For information on how to enter the ballot for tickets please see page 9.

Please join us in Stratford-upon-Avon in 2016 to celebrate 400 years of Shakespeare's legacy.

GREGORY DORAN
Artistic Director



The Rover, 1986.



Roger Rees and David Threlfall in *Nicholas Nickleby*, 1980.



Rufus Hound

Joe Cocks Studio Collection @ Shakespeare Birthplace Trust

Photo by Donald Cooper/Photostage.co.uk

RSC SHAKESPEARE ON SCREEN

Curated by John Wyver, RSC Director of Screen Productions
in association with Stratford-upon-Avon Picturehouse

In the week of the 400th anniversary celebrations of Shakespeare's death, Stratford-upon-Avon Picturehouse and the RSC will present screenings of some of the Company's most admired productions adapted for television and the cinema.

These screen versions, some of which have been seen only rarely since they were produced, feature performances from many of the greatest actors associated with the company including Vanessa Redgrave, Paul Scofield, Ian McKellen, Judi Dench and David Tennant. And they showcase the work of some of the RSC's most significant directors, including Peter Brook, Trevor Nunn and Gregory Doran.

STRATFORD-UPON-AVON PICTUREHOUSE

TUESDAY 19 APRIL, 6PM, £10.50

As You Like It, BBC TV, 1963
with Vanessa Redgrave and Ian Bannen

The 1961 stage production was recorded for television two years later and is vividly remembered by those who were fortunate enough to see it. Vanessa Redgrave is luminous as Rosalind.



Ian Bannen and Vanessa Redgrave in *As You Like It*, 1963.

**WEDNESDAY 20 APRIL,
12 NOON, £9.50**

The Wars of the Roses: Richard III,
BBC TV, 1965
with Ian Holm, Janet Suzman,
Peggy Ashcroft and David Warner

The conclusion of the great RSC History Plays Cycle adapted and directed by Peter Hall and John Barton; filmed in the RSC's Memorial Theatre in the autumn of 1964. Ian Holm is magnificently malign as Richard.

THURSDAY 21 APRIL, 3PM, £9.50

King Lear, 1971
with Paul Scofield

Peter Brook's fiercely austere film version of the play transposed his much-acclaimed Stratford production to the icy wastes of Jutland. Paul Scofield's performance as Lear remains definitive.

FRIDAY 22 APRIL, 12 NOON, £9.50

Macbeth, Thames, 1979
with Ian McKellen and Judi Dench

For many people Trevor Nunn's RSC production is the best-ever television adaptation of Shakespeare. Shot as a claustrophobic chamber piece in Thames Television's studio, the production was first seen at the RSC's studio theatre, The Other Place.



Richard II, 2013.

Photo by Kwame Lestrade

SATURDAY 23 APRIL, 2.30PM, £10.50

**RSC Live from Stratford-upon-Avon:
*Richard II***, 2013

with David Tennant, Michael Pennington,
Jane Lapotaire and Oliver Ford Davies

The first of the RSC's hugely successful live cinema broadcasts, this production began Gregory Doran's current History Plays Cycle that in early 2016 is being seen in London and New York.

SUNDAY 24 APRIL, 2.30PM, £10.50

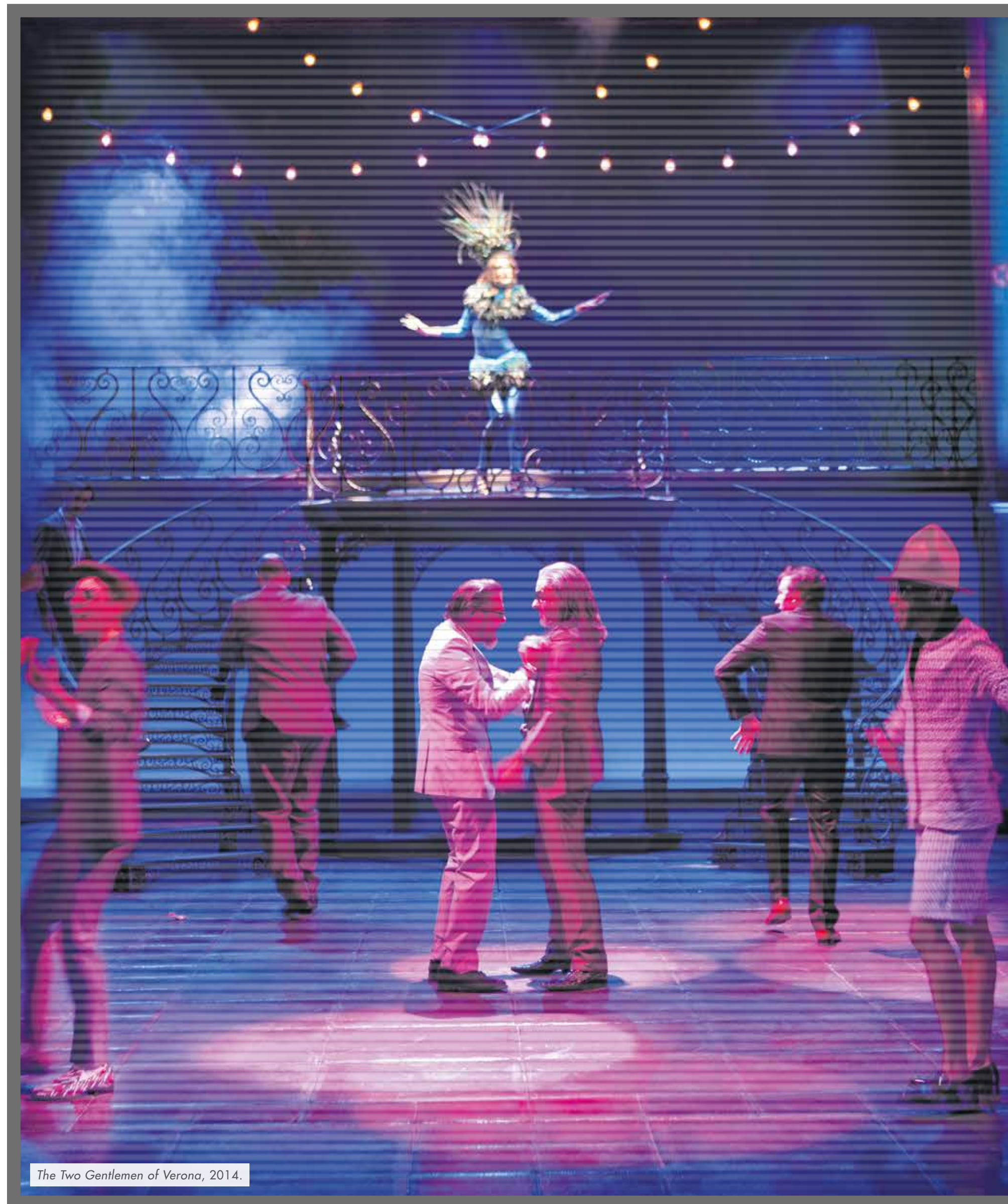
**RSC Live from Stratford-upon-Avon:
*The Two Gentlemen of Verona***, 2014

with Mark Arends, Michael Marcus,
Pearl Chanda, Sarah MacRae

Simon Godwin's sparkling, fast-paced production of this rarely-performed comedy is one of the highlights of the RSC's live cinema broadcasts. Its tale of love, betrayal, friendship and redemption is transposed to modern-day Italy, and is graced by a great score from Michael Bruce.

**Tickets will go on sale
Wednesday 13 January**

**To book tickets please call the
Picturehouse Box Office on
0871 902 5741 or visit
[www.picturehouses.com/cinema/
Stratford_Upon_Avon](http://www.picturehouses.com/cinema/Stratford_Upon_Avon)**



The Two Gentlemen of Verona, 2014.

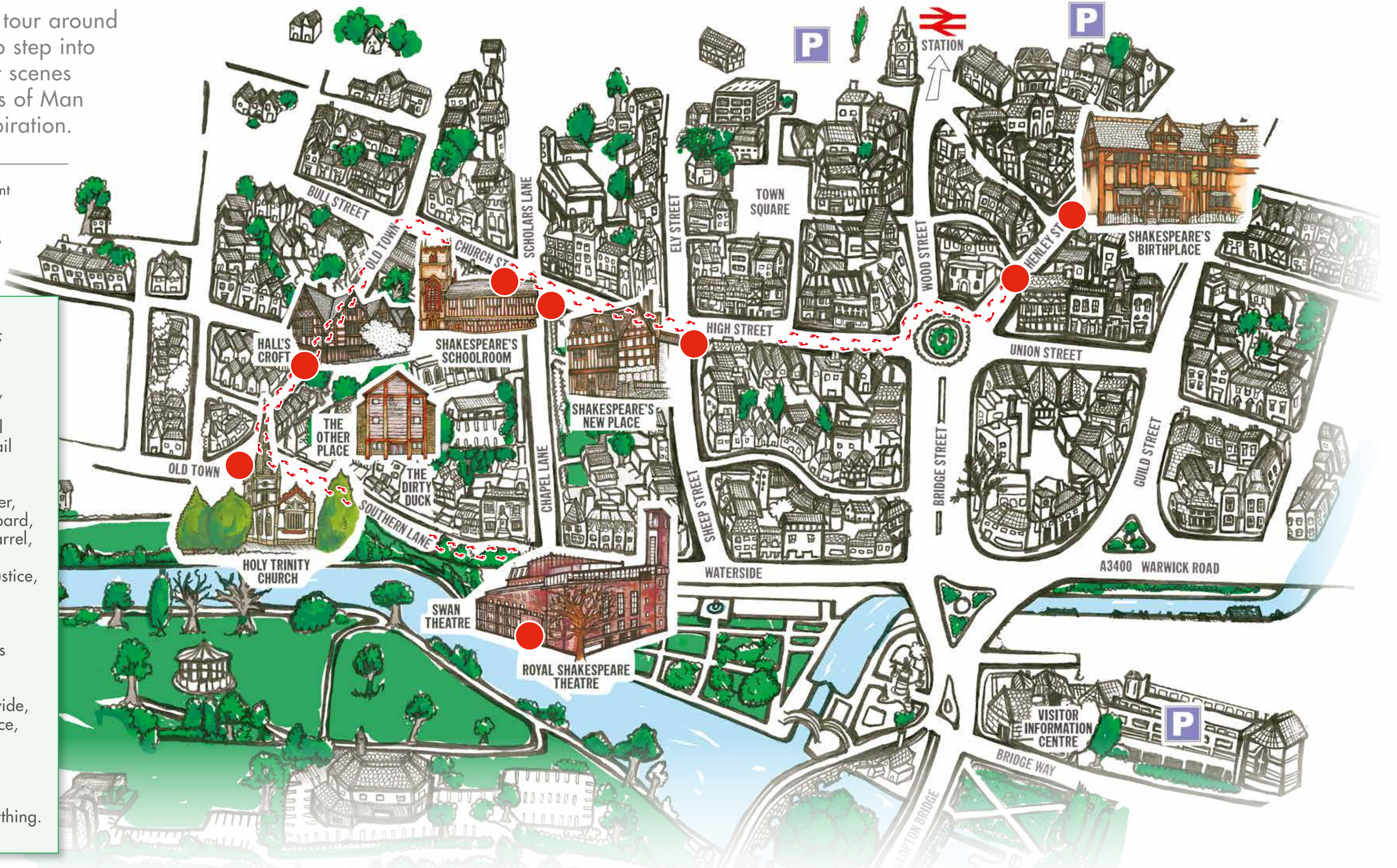
Photo by Simon Annand

Live from Stratford-upon-Avon is generously supported by SIDNEY E. FRANK FOUNDATION

STAN'S CAFE: SHAKESPEARE STEPS

From January, this free self-guide tour around Stratford-upon-Avon allows you to step into Shakespeare's shoes and re-enact scenes from his life using The Seven Ages of Man speech from *As You Like It* as inspiration.

Look for footsteps and speech bubbles on the pavement as you walk from Shakespeare's Birthplace to the Royal Shakespeare Theatre via Shakespeare's Schoolroom and Holy Trinity Church. This route marks the life and times of Shakespeare – from cradle to grave and celebrates his lasting theatrical legacy.



All the world's a stage,
 And all the men and women merely players;
 They have their exits and entrances,
 And one man in his time plays many parts,
 His acts being seven ages. At first the infant,
 Mewling and puking in the nurse's arms.
 Then, the whining schoolboy with his satchel
 And shining morning face, creeping like snail
 Unwillingly to school. And then the lover,
 Sighing like furnace, with a woeful ballad
 Made to his mistress' eyebrow. Then a soldier,
 Full of strange oaths, and bearded like the pard,
 Jealous in honour, sudden, and quick in quarrel,
 Seeking the bubble reputation
 Even in the cannon's mouth. And then the justice,
 In fair round belly, with good capon lined,
 With eyes severe and beard of formal cut,
 Full of wise saws, and modern instances,
 And so he plays his part. The sixth age shifts
 Into the lean and slippered pantaloone,
 With spectacles on nose and pouch on side,
 His youthful hose, well saved, a world too wide,
 For his shrunk shank, and his big manly voice,
 Turning again towards childish treble, pipes
 And whistles in his sound. Last scene of all,
 That ends this strange eventful history,
 Is second childishness and mere oblivion,
 Sans teeth, sans eyes, sans taste, sans everything.

As You Like It. II VII

Devised by Stan's Cafe theatre company. Commissioned by the Royal Shakespeare Company, in association with Shakespeare Birthplace Trust, Shakespeare's Schoolroom & Guildhall, supported by the Stratford Society and the Guild Chapel.

● Position of scenes

SHAKESPEARE'S BIRTHDAY WEEKEND

Join us over the weekend of Saturday 23 April to celebrate Shakespeare's lasting legacy in the town in which he was born and where he is buried.



FRIDAY 22 APRIL 2016

7.30pm, Holy Trinity Church, £10 - £30

Shakespeare Odes

For information please visit excathedra.co.uk/shakespeare-odes

SATURDAY 23 APRIL 2016

From 10am, FREE

Throughout the day, **BBC Radio 3** will broadcast from The Other Place on Southern Lane. Pop in and try our new café, have a browse around and watch the radio team at work.

Well Said!

Favourite Shakespeare Quotes exhibition
PACCAR Room, Level 2 Royal Shakespeare Theatre
A visual feast of Shakespeare's most memorable and inspiring lines interpreted by artists, designers and craftspeople.

Follow the self-guided **Shakespeare Steps** tour and walk in the footsteps of the world's greatest playwright (see previous page).

From 11am, FREE, **Town Parade**

Line the Streets of Stratford-upon-Avon to watch flags being unfurled and watch the procession from Shakespeare's Birthplace to Holy Trinity Church. Visit Shakespeare's grave at Holy Trinity Church to lay flowers.

Please note: Henley Street, High Street, Sheep Street and Waterside will remain closed to traffic until 5pm

After the procession, free street entertainment organised by the Shakespeare Birthplace Trust will take place throughout the town.

Family activities for all ages will be available in the RSC Marquee in the Swan Theatre Gardens. Craft Activities, workshops, sonnet reading and much more.

2pm and 4pm, FREE, **Wondrous Strange**

Join us at the front of the Royal Shakespeare Theatre for a show by acrobatic theatre company, **Mimbre**. The 30 minute performance will see Shakespeare's most iconic characters in unexpected encounters and includes some of the best known moments in his plays.



Photo by Sara Beaumont



Photo by Lucy Barriball

The Shakespeare Show

Royal Shakespeare Theatre

Broadcast live to BBC2

This unique collaboration between the BBC and the RSC will celebrate Shakespeare's legacy across a wide range of performing arts. Hosted by RSC Associate Artist, David Tennant.

10.30pm (approximately) **Fireworks**

After the performance we will light up the skies of Shakespeare's home town with a spectacular free fireworks display. Watch from the Bancroft Gardens at the front of the Royal Shakespeare Theatre.

SUNDAY 24 APRIL 2016

11am Shakespeare Birthday Service
Holy Trinity Church, FREE.



Photo by Lucy Barriball

VISIT
STRATFORD-UPON-AVON
AND

Shakespeare's
ENGLAND

To find out what else is happening in the region over the celebration weekend, or to book hotels, visit shakespeares-england.co.uk

ENTER THE BALLOT TO WIN TICKETS FOR THE SHAKESPEARE SHOW

Due to the live broadcast of this event and the presence of television cameras, there will be strictly limited allocation of tickets. However, if you would like to be in the Royal Shakespeare Theatre on the evening of Saturday 23 April to watch *The Shakespeare Show*, we have 25 pairs of tickets for RSC Members plus 25 pairs of tickets for Supporters.

FOR A CHANCE TO WIN A PAIR OF TICKETS:

Supporters please email supportersdraw@rsc.org.uk with Shakespeare Circle or Patron in the title or write to Supporters' Draw, Development Department, Royal Shakespeare Company, Stratford-upon-Avon, CV37 6BB, including your full name, membership number, postal address, any access requirements and a daytime contact telephone number. Further details on inside back page.

The closing date is Friday 12 February 2016. We will contact all winners by Monday 29 February 2016. Due to security arrangements, these tickets are not transferable and photographic ID will be required to attend.

Full terms and conditions can be found at www.rsc.org.uk/Shakespeare-Show-Draw



Photo by Lucy Barriball

A CO-PRODUCTION BETWEEN THE ROYAL SHAKESPEARE COMPANY AND AMATEUR THEATRE COMPANIES ACROSS THE UK

A MIDSUMMER NIGHT'S DREAM

WILLIAM SHAKESPEARE
A PLAY FOR THE NATION

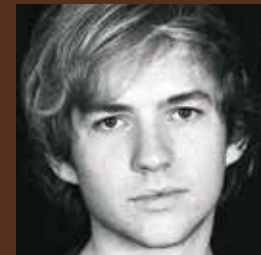
17 February – 5 March
National tour
15 June – 16 July

Ayesha Dharker (*Arabian Nights* 2009, *Othello* 2015), Jack Holden (*The Shoemaker's Holiday*, *Oppenheimer* 2014), Chris Nayak (*Love's Labour's Lost*, *Love's Labour's Won*, *The Christmas Truce*, 2014) Chu Omambala (*The Canterbury Tales* 2005, *Hecuba* 2015) return to the Company. Mercy Ojelade and Laura Riseborough make their RSC debut.

This is an arrangement developed between the RSC and Equity. Supported by Arts Council England Cross-Border Touring Fund.



Ayesha Dharker



Jack Holden



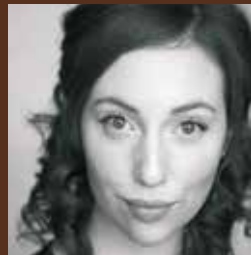
Chris Nayak



Mercy Ojelade



Chu Omambala



Laura Riseborough

HAMLET

WILLIAM SHAKESPEARE

12 March – 13 August

Paapa Essiedu (*The Merry Wives of Windsor*, *The Mouse and His Child* 2012) returns to the Company to play Hamlet.



Paapa Essiedu

THE TRAGICAL HISTORY OF THE LIFE AND DEATH OF

DOCTOR FAUSTUS

CHRISTOPHER MARLOWE

4 February – 4 August

Sandy Grierson (*What Country Friends Is This* cycle 2012, including Ariel in *The Tempest*) and Oliver Ryan (*As You Like It* 2013, *Morte D'Arthur* 2010 and *Romeo and Juliet* 2010) will share the roles of the embittered academic Faustus and the demon Mephistophilis, alternating the parts at each performance.



Sandy Grierson



Oliver Ryan

THE INGENIOUS GENTLEMAN

DON QUIXOTE

ADAPTED BY JAMES FENTON FROM THE NOVEL BY MIGUEL DE CERVANTES

25 February – 21 May 2016

David Threlfall (*The Merry Wives of Windsor* 1979, *The Life and Adventures of Nicholas Nickleby* 1980) takes on the title role. Making his RSC debut as Sancho Panza is Rufus Hound (*War of the Roses* cycle Rose Theatre Kingston, *Dirty Rotten Scoundrels* 2014, *One Man, Two Guvnors* 2013).



David Threlfall



Rufus Hound

SHAKESPEARE'S BIRTHDAY WEEKEND 2016

With limited capacity in the RST, we wanted to give as many of our supporters as possible the chance to celebrate and raise a glass with us and have arranged a very special and exclusive private screening in the newly opened TOP. In order to guarantee your place on this momentous evening, please enter the ballot and purchase your ticket to TOP event. If you are successful in the ballot, a full refund will be available for the TOP Tickets. We'll announce the winners of the ballot by 29th February and tickets to the special screening are now on sale.

THE SHAKESPEARE SHOW – PRIVATE SCREENING

THE OTHER PLACE, 8.00PM-10.30PM

Come and join us as we open the doors to The Other Place to host a private screening for you, (Gold and Silver Patrons, Shakespeare Circle members) and your guest. We will transform The Other Place into a private cinema for one night only for this special evening. Please join us as we come together to watch the onstage celebration live on BBC2.

Enjoy a pre-screening drinks reception before entering the auditorium with Prosecco and popcorn where we will be joined by members of current Acting Companies and special guests.

Tickets for this exclusive event are £30 per person (limited to 2) and will be sold on a first come, first served basis.

For more information or to book your place for this exclusive event please contact Kate Perry at invitation@rsc.org.uk or 01789 403467.

THE SHAKESPEARE SHOW

ROYAL SHAKESPEARE THEATRE, 8.00PM – 10.30PM
SATURDAY 23 APRIL 2016

The Shakespeare Show is a unique collaboration with the BBC in celebration of Shakespeare's legacy. Hosted by David Tennant, the onstage performance will include contributions from RSC alumni alongside artists from the world of opera, jazz, dance and theatre. Tickets for The Shakespeare Show are not available for purchase.

ARTISTS CIRCLE

As the annual invitation from our Artistic Director, Artists Circle supporters are invited to join Gregory Doran inside the auditorium for The Shakespeare Show. Your seats are reserved so you can join the celebration in this special anniversary year.

GOLD AND SILVER PATRONS TICKET BALLOT*

We invite you to enter a ballot for a chance to win one of 15 pairs of tickets for the live performance of The Shakespeare Show.

SHAKESPEARE CIRCLE TICKET BALLOT*

We invite you to enter a ballot for a chance to win one of 10 pairs of tickets for the live performance of The Shakespeare Show.

*Both ballots can be entered by emailing supportersdraw@rsc.org.uk, or by writing to Supporters' Draw, Development Department, Royal Shakespeare Company, Stratford-upon-Avon, CV37 6BB, including your full name, membership ID, postal address, any access requirements and a daytime contact telephone. Names will be drawn at random and winners will be notified by Monday 29 February. Tickets are strictly limited to 2 per person and are non-transferable.

AUTOMATION INSIGHT EVENT

Our *Wendy & Peter Pan* insight event looking at the use of automation was a fantastic chance for our guests to have an exclusive, behind-the-scenes look at the great work our automation team does in bringing this magical production to life, as well as seeing the *Lost Boys'* hideaway and *Captain Hook's* pirate ship in action!

Our Events team will be looking into more insight sessions for patrons in the new year, so look out for more opportunities to explore our productions and theatres in the coming months.



Photo by Gina Print

FORTHCOMING EVENTS 2016

Please note that as a registered charity the events are charged to cover costs.

ARTISTS CIRCLE, GOLD AND SILVER PATRONS

VIP TOURS AT THE OTHER PLACE

STRATFORD-UPON-AVON, FEBRUARY 2016

An opportunity not to be missed! A chance to tour behind the scenes of The Other Place before we officially open our doors. We are very pleased to be able to offer 10 VIP tours to our Patrons and Artist Circle members. Places will be allocated on a first-come, first-served basis so please do not hesitate to book.

Tours will run daily for up to 10 people at 10.00am and 4.00pm from 15 - 19 February 2016. Tickets are priced at £15 per person to include refreshments, a VIP tour and an insight into the development of The Other Place.



ARTISTS CIRCLE, GOLD AND SILVER PATRONS AND SHAKESPEARE CIRCLE

THE UNDERSTUDY PROCESS – HAMLET

STRATFORD-UPON-AVON, 12 NOON - 5PM,
WEDNESDAY 30 MARCH 2016

The understudy rehearsal programme at the RSC is unique and we are often asked how actors learn their understudy roles alongside their regular rehearsals. On Wednesday 30 March we will host an event around the understudy performance of *Hamlet* where members of the Acting Company and Creative Teams will give their unique insight into the RSC's understudy process.

Tickets are priced at £20 per person to include pre-show insight brunch, matinee performance of *Hamlet* and post-show refreshments.

THE SHAKESPEARE SHOW

23 APRIL 2016

A unique collaboration with the BBC in celebration of Shakespeare's legacy, including an opportunity to buy a ticket to an exclusive private screening event just for you, our Supporters, in The Other Place. See inside back cover for full details of how to get your ticket.

SHOWCASE DAY

STRATFORD-UPON-AVON, 10AM - 4PM
SATURDAY 4 JUNE 2016

Our annual Showcase Day offers a unique insight into the Company with an interactive day of talks, workshops and insight. This year's event will be held at The Other Place and will feature our Executive Director Catherine Mallyon and Deputy Artistic Director Erica Whyman. We will also focus on the 2016 artistic programme with input from the creative teams behind our productions.

Tickets are priced at £40 per person to include lunch. We are holding a limited number of tickets for the evening performance of *Hamlet*, if you would like to stay for the show please let us know.



Photo by Lucy Barriball

SUPPORTERS' EVENING

STRATFORD-UPON-AVON, 6PM - 11.30PM
FRIDAY 28 OCTOBER 2016

This year Supporters' evening will centre on *The Two Noble Kinsmen*, one of the last plays written by Shakespeare in collaboration with John Fletcher. It's the story of two cousins united in battle, divided by a woman and a grand tournament to win her heart. The evening will include a pre-show dinner, performance and post-show party with the Acting Company.

Please save the date. Tickets for Supporters' Evening will go on sale with the next newsletter in the spring.



Photo by Gina Print

GOLD PATRONS AND ARTISTS CIRCLE

Across each season, we are delighted to invite our Gold Patrons and Artists Circle to join us for Press Nights taking place in the RST and Swan Theatres in Stratford-upon-Avon. All available dates can be found on your Supporter Events Calendar. Ticket price includes private interval drinks.

For more information on our events or to book a place, please contact Kate Perry at invitation@rsc.org.uk or **01789 403467**.